

Driving Possibilities™

Driving Possibilities is a \$110 million career readiness and community engagement initiative of the Toyota USA Foundation. It's a new way for Toyota to partner with educators, nonprofits, other industries and communities to address roadblocks to learning, all while preparing youth for the future of work.







Why We're Doing It

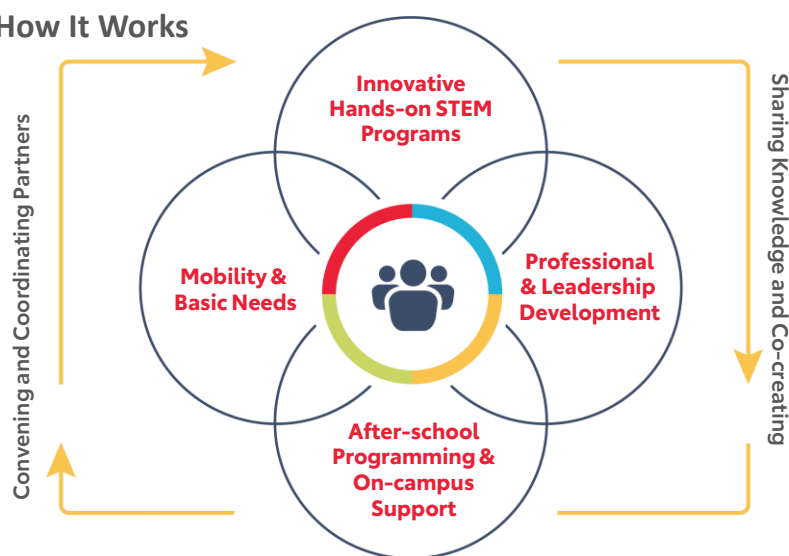
Toyota believes **all kids** deserve an equal opportunity to access rewarding careers in high-growth industries—and the future of companies like ours depends on it.



What We're Driving Towards

-  Increasing excitement and readiness for STEM careers
-  Coordinating community-based services to fuel innovative solutions
-  Decreasing barriers that impact success (e.g., mobility issues, food insecurity)
-  Engaging businesses for mentoring, training and career readiness efforts

How It Works



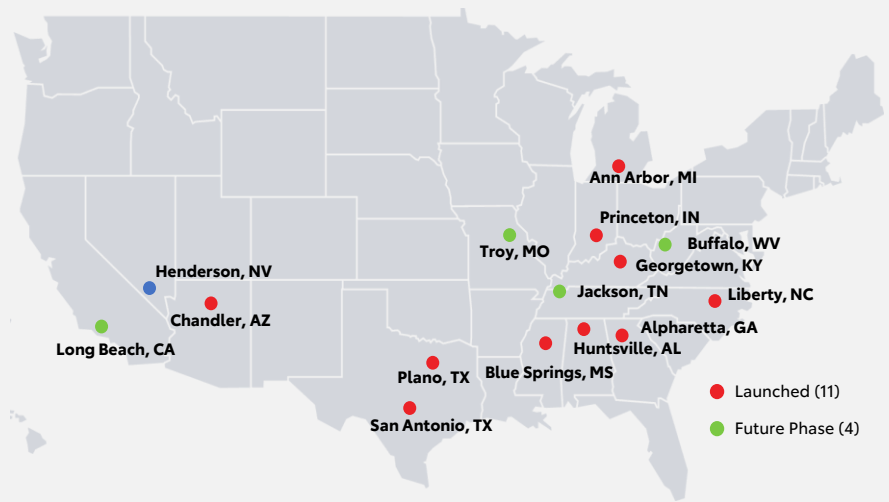
Creating Opportunity Across the Education Career Continuum



Over the next decade, nearly **3.8M manufacturing and STEM-related jobs will be available** and **1.9M** are expected to go unfilled due to the skills gap.

Reaching up to 49,279 students in 69 schools

- ✓ 14 school districts & 24 collaborators
- ✓ \$78.9M committed to date
- ✓ 1,100+ Toyota team members engaged



Our Impact on Students: *Progress Towards Outcomes*

Foundational Outcomes

Overcoming Barriers



+ 13pp

increase in students that have **resources needed** to learn and succeed in school

Near-Term Outcomes

Awareness



+ 31pp

average increase in students **aware** of STEM curriculum and careers

Interest



+ 23pp

average increase in students **interested** in STEM curriculum and careers

Confidence in STEM



+ 19pp

increase in students **confident** in their ability to succeed in STEM classes or careers

Intermediate Outcomes

STEM Commitment



+ 13pp

increase in students **committed** to continuing their education in STEM

Our Impact on Partners: *Driving Possibilities' Impact on Communities*



Access to Resources

95%

report the program provides increased traction and new **resource access** for organizations



Capacity Building

86%

report the program helps to **build capacity** to reach more students, families, and teachers



Upward Mobility

81%

report the program enables **upward mobility** by preparing and connecting students to opportunities



Student Trajectory

78%

report a positive impact on long-term **student trajectory**

Together we can do more.

To learn how you can join us in creating limitless possibilities for all, contact drivingpossibilities@toyota.com.

